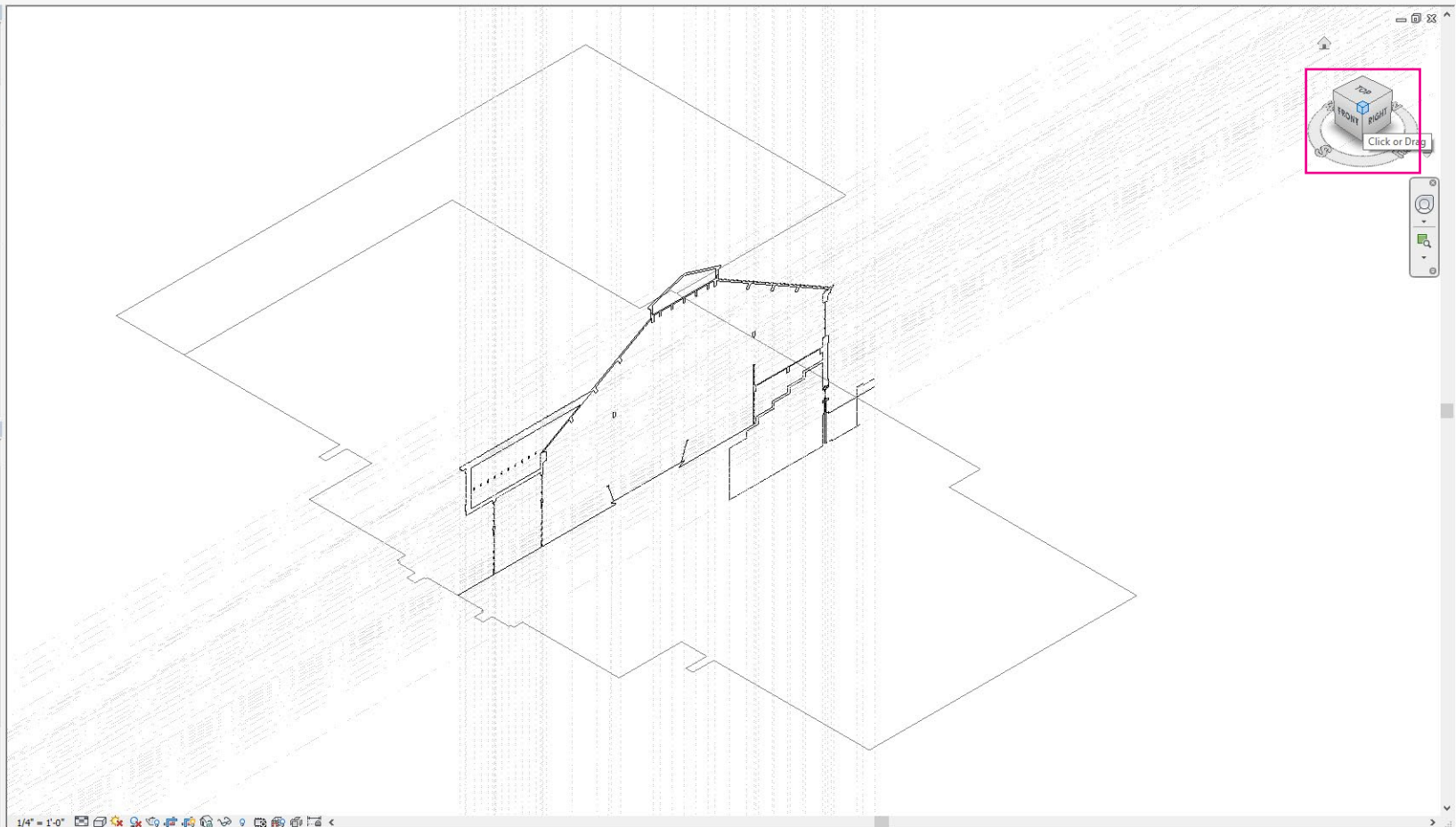
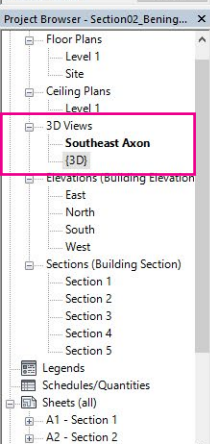
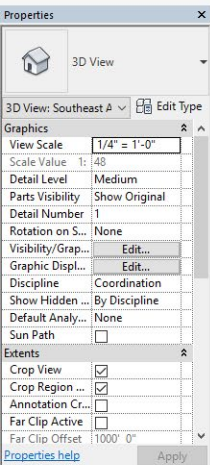
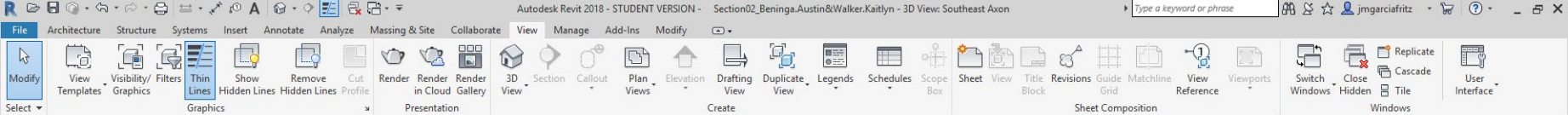
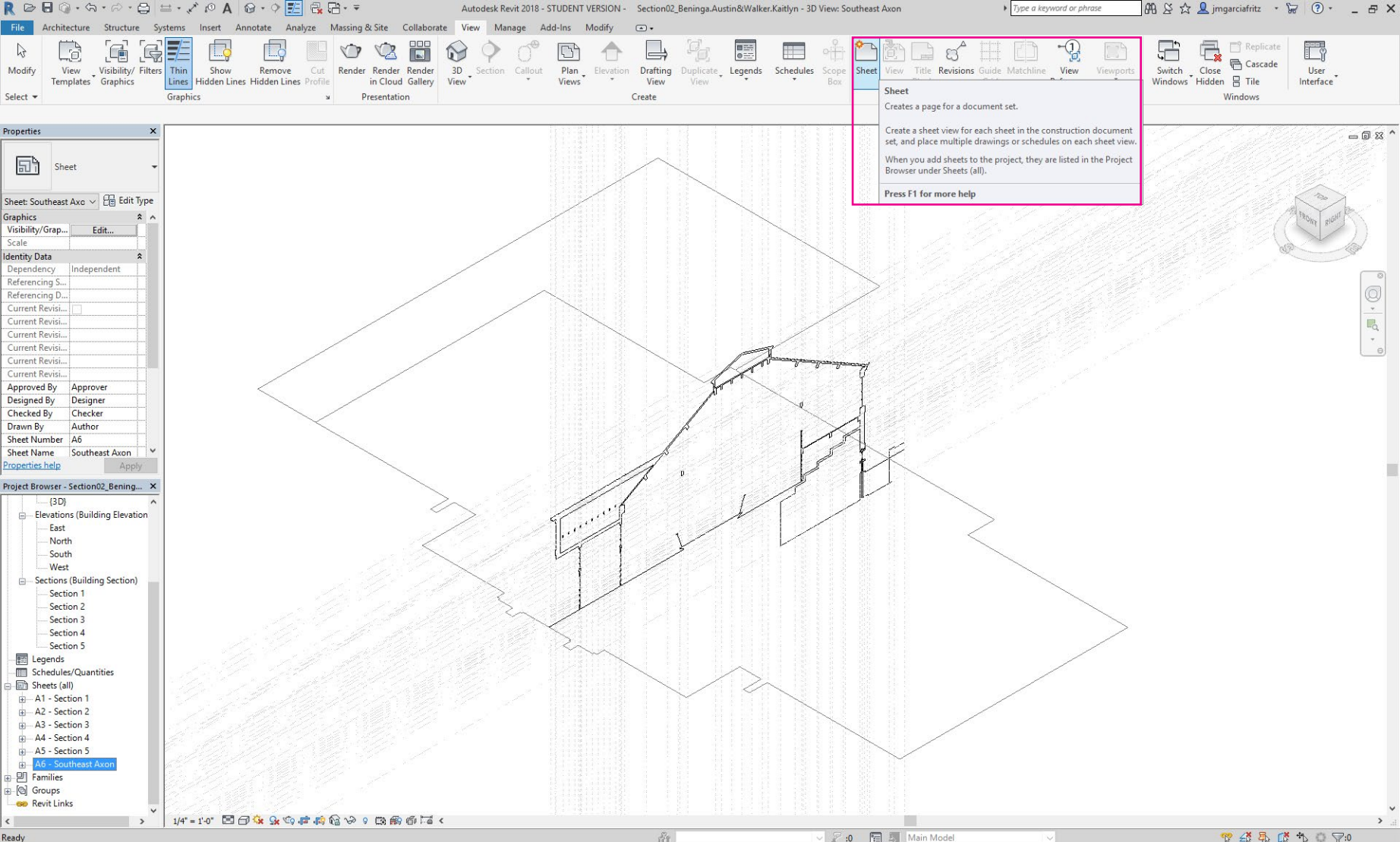


ARCH 451: PRESENTING IN REVIT
ADDING FAMILIES

NEW VIEWS AND NEW SHEETS



Right click on 3D under 3D views and click DUPLICATE VIEW. On the compass in the top right corner, click on the corner to set your view.



Add a SHEET and label it according to your Axonometric view.

FAMILIES

FAMILIES

1- SYSTEM FAMILIES: Basic elements that you would assemble on a construction site.

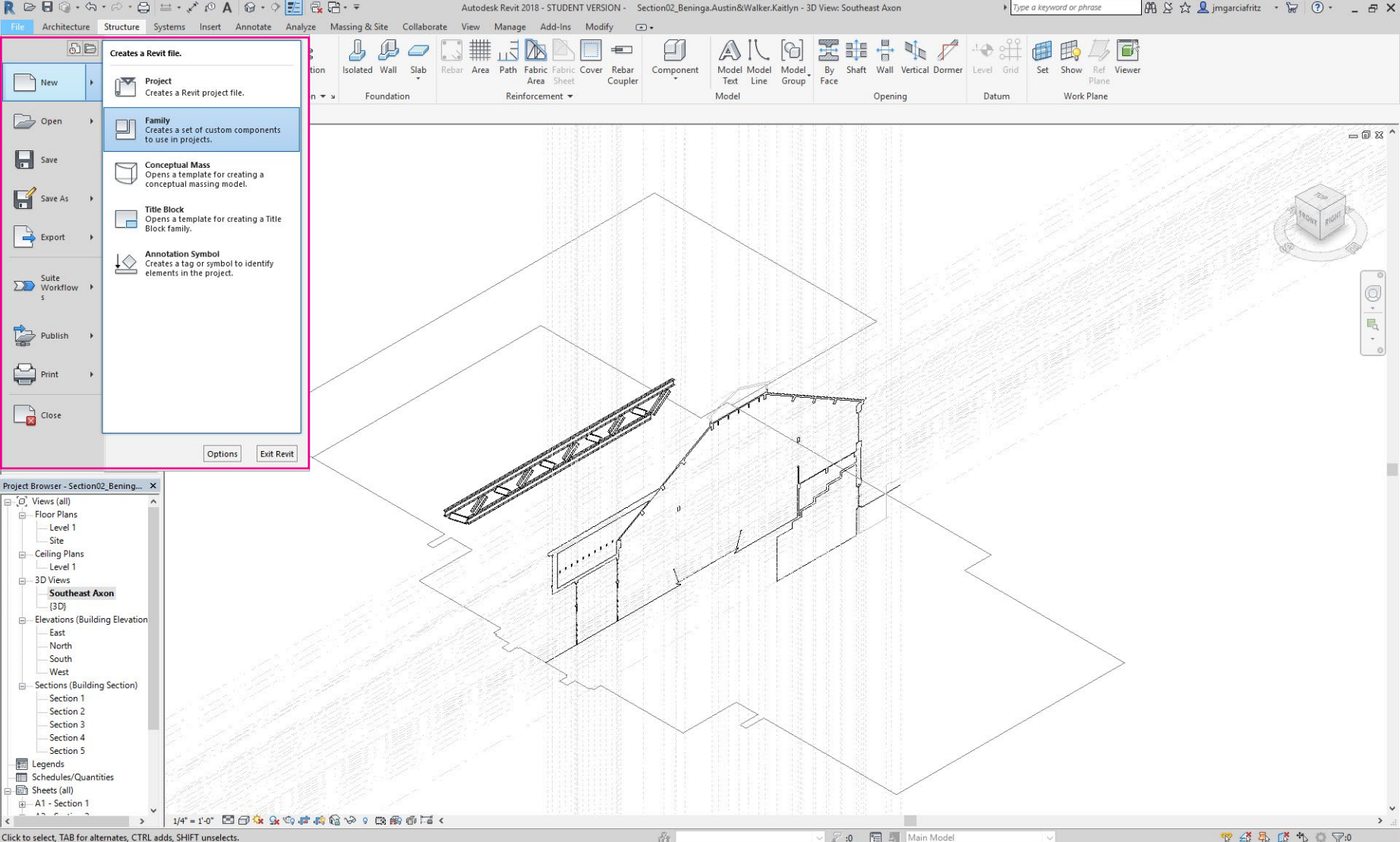
- Walls, roofs, floors
- Include types for levels, grids, drawings sheets, and viewports
- Are pre-defined in Revit

2- LOADABLE FAMILIES: Used to create Building components that would usually be purchased as well as some annotation elements

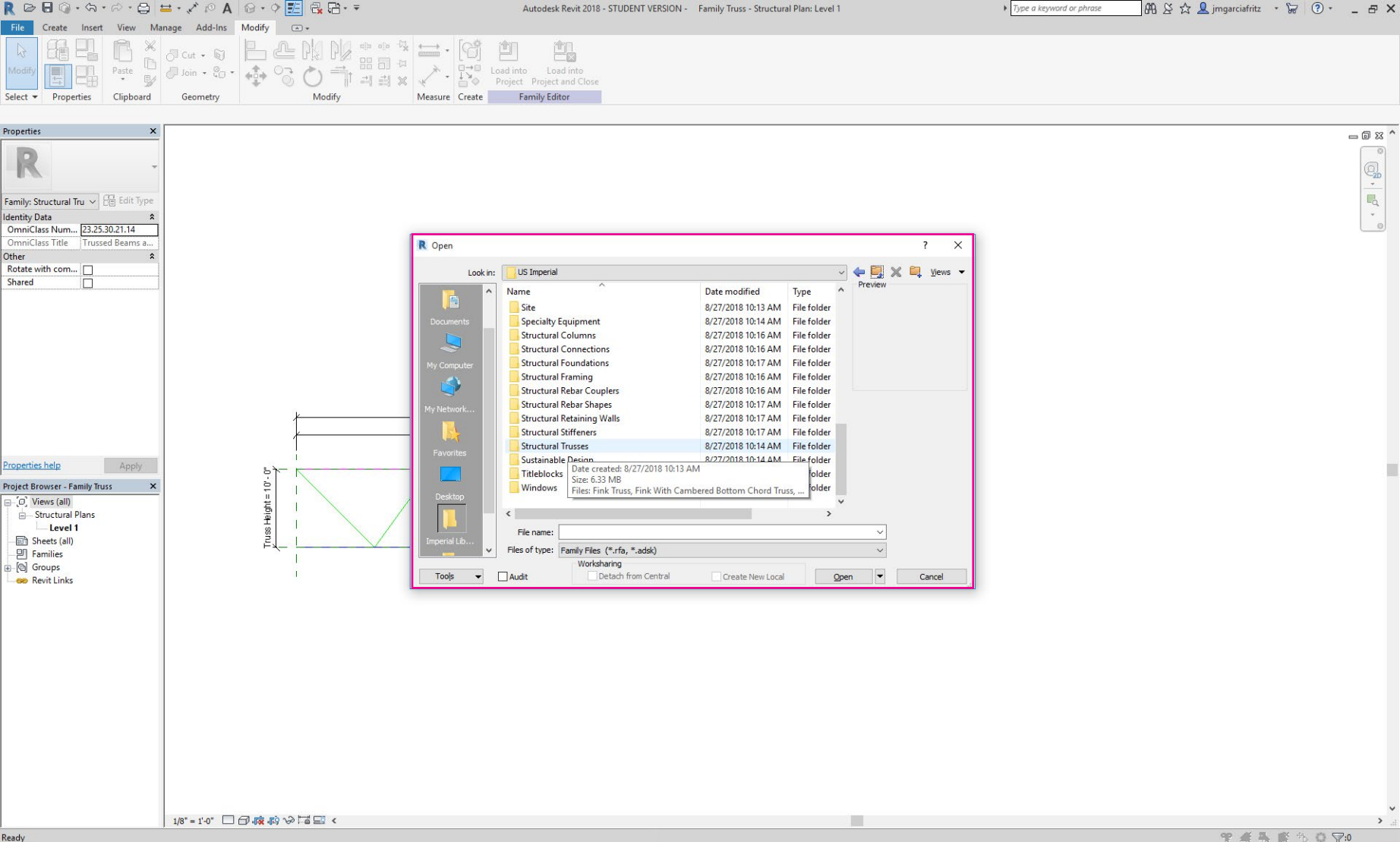
- Also known as a component
- Building components include windows, doors, casework, fixtures, furniture, and planting

3- IN-PLACE FAMILIES: Unique elements that you create when you need to create a unique component that is specific to the project.

- Also known as a component
- In-place geometry can be created that references other geometry.



Make a TRUSS family. Either make it from scratch by click on NEW > FAMILY or....



OPEN an existing STRUCTURAL TRUSSES family and edit it.



Load the family into your file and place it where it needs to go. Click on INSERT > LOAD FAMILY